

3  
NEW  
SIZES

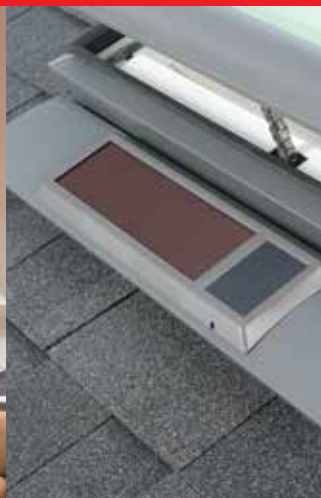
VELUX®

# World-leading skylights and roof windows

Product information and price list 2021



OPENABLE FLAT  
ROOF SKYLIGHTS



SOLAR-POWERED  
SKYLIGHTS



VELUX  
ACTIVE



STREAMLINED  
EXTERIOR



CodeMark  
CERTIFIED



HAIL  
TESTED



BUSHFIRE  
BAL40



CYCLONE  
TESTED



20+ Videos  
VELUX Australia

Throughout the construction industry, VELUX is a by-word for quality, a reputation that has been painstakingly built up for more than 35 years in Australia and for over 75 years around the world.

Perfectly designed to withstand the world's harshest climatic conditions, all VELUX products are of the highest quality and will perform superbly for a lifetime of faultless service.



Take a look through this guide and judge for yourself. For range, quality, value, guarantees, delivery and service – VELUX is a world leader.

## Guaranteed to last...

**10 Year Warranty**  
on all skylights, roof windows and flashings.

**3 Year Warranty**  
on accessories, including electric controls & blinds.



CodeMark® is a voluntary certification scheme owned by the Commonwealth of Australia that provides legally binding evidence of compliance to the Building Code of Australia. One certificate replaces dozens of technical papers.

### Surpasses Australian tests for skylights

<p>AS4285 SKYLIGHTS</p> <p>Cyclonic† &amp; Non-Cyclonic</p>	<p>AS1288 OVERHEAD GLAZING</p> <p>Laminated inner pane</p>	<p>AS3959 BUSHFIRE*</p> <p>Attack Level 40</p>
---	--	--

### Window Energy Rating Scheme (WERS)

(MAXIMUM 5 ON WERS SUMMER RATING)



VELUX Skylights and Roof Windows are included in the National Energy Rating programme (AccuRate) as well as state run programmes such as Basix & FirstRate.

#### Building Code compliance

All VELUX Skylights/Roof Windows (except Sun Tunnels) are deemed non-combustible and thereby comply with NCC Boundary Separation requirements i.e. suitable for use within 900mm of a boundary for buildings of Class 1 & 10 (typical residential dwelling)\*.

\* CSIRO assessment report available on request. VELUX recommends consultation with relevant authority before work commences. Opening models assessed in closed position.

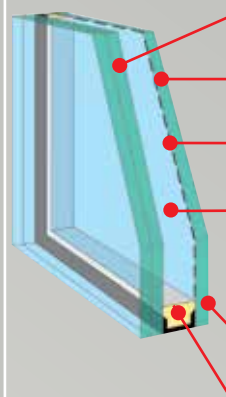
^ Skylight product range only. Custom-made flashing required. Tested in closed position, fire resistant mesh may be required for opening models. Rigid Sun Tunnel BAL29. Please consult your local council.

† Except GPL Roof Window and Sun Tunnel. VCS/VCM cyclone test not performed with screws provided, installation requires the use of #8 roofing screws.

## Glazing

### High Performance double glazing

Now standard across entire skylight range



- Laminated inner panes (total 5.36mm) for added safety.
- 3mm outer pane of toughened safety glass.
- Low-E<sup>3</sup> coating maximises Light Transmittance/reduces Solar Heat Gain.
- 9mm Argon filled cavity together with Low-E<sup>3</sup> coating increases thermal performance by reducing heat flow through the pane.
- NEAT™ Coating on outer pane reduces cleaning frequency.
- Warm edge technology increases energy efficiency.



#### Benefits:

- Radiant heat block: Complete window **approx 75%**
- UV Harmful rays block **approx 99%**
- Noise reduction factor **32 decibels**
- WERS rating **5 stars**
- Double layer of Low-E<sup>3</sup> coating.
- 10 year warranty on insulated glass seal.
- Reduced cleaning frequency.

#### Australian Standard AS1288

Laminated glass (standard) must be used for skylights installed 3m or more above floor level.

### NEAT™ Photocatalytic Coating

- Silicone Dioxide/Titanium Dioxide coating reacts with the sun's UV rays to decompose surface organic dirt before rinsing away with the next shower of rain, thereby reducing cleaning frequency.
- The coating also makes the glass surface smoother, so water disperses evenly, sheets off and evaporates quickly; thereby minimising water spotting on the pane.



GGL/GPL window pane tint (i.e. colouration) is slightly different to skylight window pane tint.

## Measure & Quote

VELUX has recommended installers throughout the country that are trained to install VELUX skylights. Scan the QR code below and complete the online webform when you're ready to take the next step, and we'll arrange for a recommended installer in your area to provide a Measure & Quote.



Installers recommended by VELUX are independent contractors who have been trained in the installation of VELUX products but are not employed by VELUX Australia. VELUX cannot be held responsible for work carried out on your property by installers who are independent of VELUX Australia.

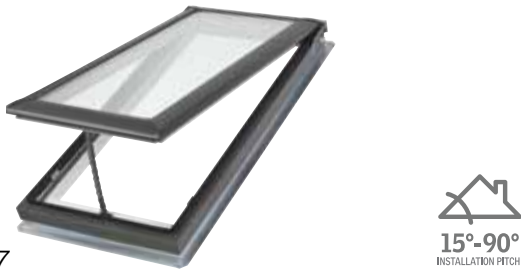
## Pitched Roof Skylights

**VSS** Solar-powered



Page 5

**VS** Manually operated



Page 7

**FS** Fixed (non-opening)



Page 9

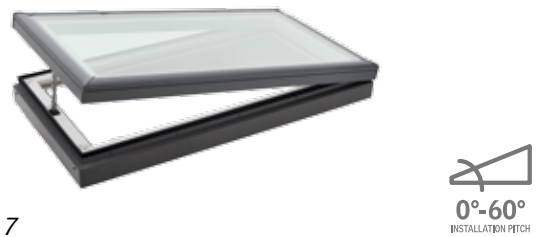
## Flat Roof Skylights

**VCS** Solar-powered



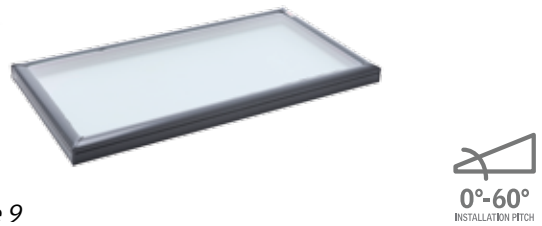
Page 5

**VCM** Manually operated



Page 7

**FCM** Fixed (non-opening)



Page 9

## Sun Tunnels and Roof Windows

**TWR** Rigid



Page 11

**TWF** Flexible



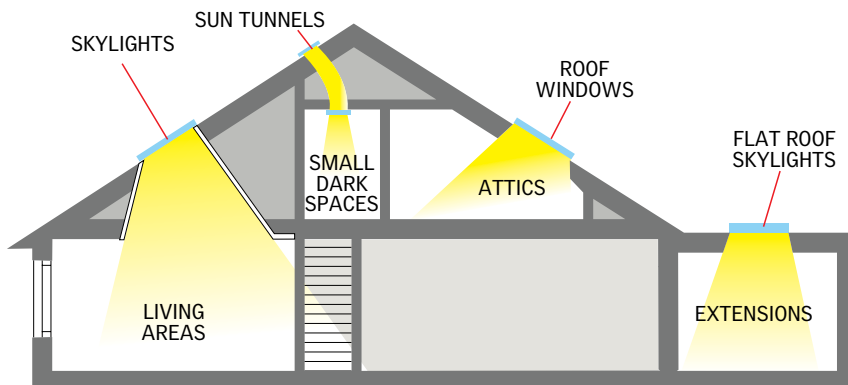
Page 11

**GGL**

White pre-painted finish



Page 10



**GPL**

White pre-painted finish



Page 10

# Automatic sensor-based ventilation\*

## Solar-powered Skylight



- Solar panel mounted below the skylight provides all the power needed to operate the skylight.
- Rain sensor automatically closes skylight when rain is detected.
- Battery power negates power surges and blackouts.
- Easy to install, no need for electrical wiring.

**\*Requires VELUX ACTIVE**  
– sold separately (Page 5)



## Pitched Roofs



### VSS

#### Solar-powered skylight

The ultimate skylight that provides abundant daylight and controllable ventilation. Features a solar panel that captures available daylight to recharge a highly efficient, concealed battery-powered operator and control system.

- Electrician not required to install.
- White painted interior timber frame and sash.
- Outer aluminium cappings (grey).
- Smooth profile sits lower in the roof, does not obstruct the roofline.
- Available in 10 sizes.
- Wall-mounted key pad.
- Rain sensor automatically closes the skylight when rain is detected.
- High Performance double glazing, with NEAT™ outer coating: reduces cleaning frequency.
- Includes removable insect screen.
- Complete with flashing for corrugated iron or tile roofs.



#### Technical Performance

U-value†	
Skylight	2.50
Glass only	1.93

Solar Heat Gain Co-efficient†	
Skylight	0.21
Glass only	0.28

Heat block	
Approx	80%

Bushfire^	
BAL	40

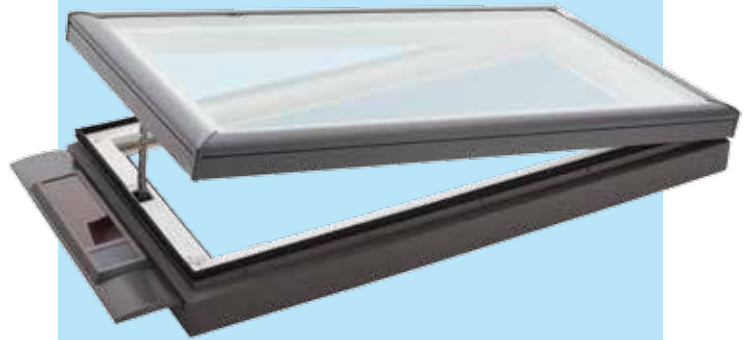
Hailstone Test±	
VELUX Simulated Tests	ASTM E822-2009

WERS max 5 stars (summer rating)	
★ ★ ★ ★ ★	

Australian Standards	
AS4285	AS1288
AS3959^	AS1530.8.1††



## Flat Roofs



### VCS

#### Solar-powered skylight

The ultimate flat roof skylight that provides abundant daylight and controllable ventilation. Features a solar panel that captures available daylight to recharge a highly efficient, concealed battery-powered operator and control system.

- Electrician not required to install.
- Maintenance Free – White PVC interior frame for a tough, hard wearing interior finish.
- Outer aluminium cappings (grey).
- Available in 7 sizes.
- Wall-mounted key pad.
- Rain sensor automatically closes the skylight when rain is detected.
- High Performance double glazing, with NEAT™ outer coating: reduces cleaning frequency.
- Includes removable insect screen.
- Requires custom-made flashing (not supplied by VELUX).



#### Technical Performance

U-value†	
Skylight	2.9‡
Glass only	1.93

Solar Heat Gain Co-efficient†	
Skylight	0.24
Glass only	0.28

Heat block	
Approx	75%

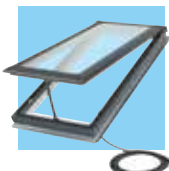
Bushfire^	
BAL	40

Hailstone Test±	
VELUX Simulated Tests	ASTM E822-2009

WERS max 5 stars (summer rating)	
★ ★ ★ ★ ★	

Australian Standards	
AS4285#	AS1288
AS3959^	AS1530.8.1††

‡See installation preparation guide on page 9.



#### Also available

### VSE

#### Electrically operated



- Choice of 9 sizes.
  - 2 metre lead (supplied) plugs into power point.
  - White painted interior timber frame and sash.
  - Insect screen, rain sensor and wall-mounted keypad included.
- Visit [www.velux.com.au](http://www.velux.com.au) for more details.

#### VELUX ACTIVE indoor climate control (sold separately)

- **Sensor-based ventilation:** Smart sensors continuously monitor temperature, humidity and CO<sub>2</sub> levels and open or close your skylights accordingly.
- **Stay in control:** Use the app to operate your skylights and blinds using your smartphone.



### Solar Powered Blinds

- Honeycomb – FSCH (for VSS/VSE), FCC (for VCS)
- Blockout – DSH (for VSS/VSE)

- All blinds are available in white.
- Sold separately.
- Unique installation system allows easy installation.

\* For roofs below 15° pitch, VSS/VSE skylights need to be raised to 15° and custom flashed. VELUX can assist with technical advice and drawings. (NB: build-up not recommended in Bushfire areas.)

\*\* VELUX recommends VCS is installed with a slight pitch (e.g. 3°-5°) to help reduce condensation build-up and water ponding on the glass.

† U-value (W/m²K) and SHGC data based on AFRC simulations, (complete skylight size; VSS/VSE: 1140mm x 1180mm, VCS: 1275mm x 1275mm).

‡ Cyclone test not performed with screws provided, installation requires #8 roofing screws.

± Hailstone test not performed on solar panel. Solar panel not attached during test.

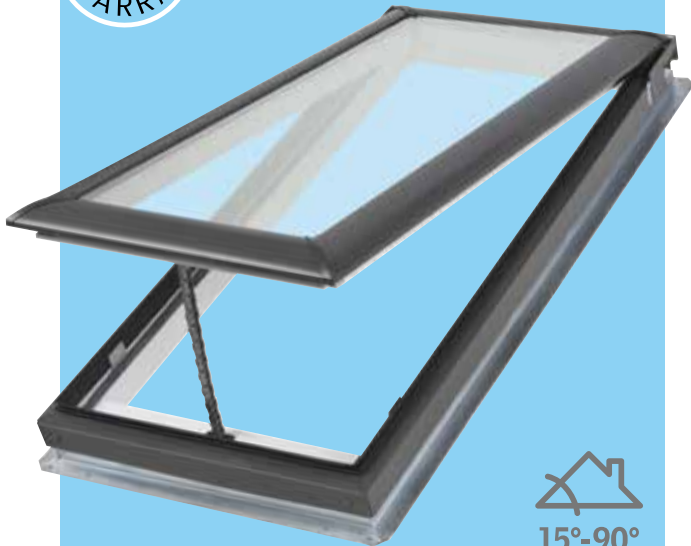
^ Skylight only. Custom-made flashing required. Skylight tested in closed position (VCS BAL assessed – based on VSS results), metal flywire mesh protection required for opening apertures (consult local council). Roof pitch: VSS: 18°-75°, VCS: 0°-60°. †† Assessed in closed position.



Healthy daylight, fresh air  
and sky views



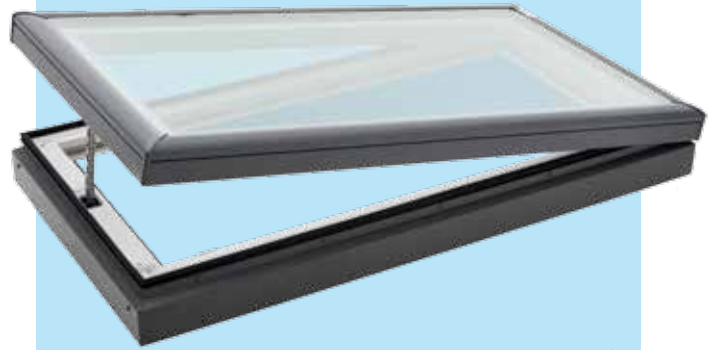
## Pitched Roofs



15°-90°  
INSTALLATION PITCH\*



## Flat Roofs



0°-60°  
INSTALLATION PITCH\*\*

# VS

## Manually operated

Provides the comfort and energy savings of free daylight and natural ventilation.

- White painted interior timber frame and sash.
- Outer aluminium cappings (grey).
- Smooth profile sits lower in the roof, does not obstruct the roofline.
- Available in 10 sizes.
- High Performance double glazing as standard; with NEAT™ outer coating: reduces cleaning frequency.
- Includes removable insect screen.
- Complete with flashing for corrugated iron or tile roofs.
- Operated by extendable rod (or by winder handle for in-reach).



### Technical Performance

U-value†	
Skylight	2.50
Glass only	1.93

Solar Heat Gain Co-efficient†	
Skylight	0.21
Glass only	0.28

Heat block	
Approx	80%

Bushfire^	
BAL40	

Hailstone Test	
VELUX Simulated Tests	ASTM E822-2009

WERS max 5 stars (summer rating)	
★★★★★	

Australian Standards	
AS4285	AS1288
AS3959^	AS1530.8.1††

# VCM

## Manually operated

Cost effective solution for natural ventilation in flat roofs.

- Maintenance free – White PVC interior frame for a tough interior finish.
- Outer aluminium cappings (grey).
- Available in 6 sizes.
- High Performance double glazing as standard; with NEAT™ outer coating: reduces cleaning frequency.
- Includes removable insect screen.
- Requires custom-made flashing (not supplied by VELUX).
- Operated by extendable rod (or by winder handle for in-reach).



### Technical Performance

U-value†	
Skylight	2.9‡
Glass only	1.93

Solar Heat Gain Co-efficient†	
Skylight	0.24
Glass only	0.28

Heat block	
Approx	75%

Bushfire^	
BAL40	

Hailstone Test	
VELUX Simulated Tests	ASTM E822-2009

WERS max 5 stars (summer rating)	
★★★★★	

Australian Standards	
AS4285#	AS1288
AS3959^	AS1530.8.1††

‡See installation preparation guide on page 9.

## Blinds for VS

**Solar-Powered Honeycomb – FSCH**  
**Solar-Powered Blockout – DSH**

Includes wireless, wall-mounted keypad



- All blinds are available in white. • Sold separately.
- Unique installation system allows easy installation.

### Manual control options VS (sold separately)

- Winder handle for operating within-reach.
- Telescopic rod control for out-of-reach situations. (145cm in length, extendable up to 285cm.)



- Short control rod. 60cm long.

## Blinds for VCM

**Solar-Powered Honeycomb – FSCH**  
Includes wireless, wall-mounted keypad.



- All blinds are available in white. • Sold separately.
- Unique installation system allows easy installation.

### Manual control options VCM (sold separately)

- Winder handle for operating within-reach.
- Telescopic rod control for out-of-reach situations. (145cm in length, extendable up to 285cm.)



- Short control rod. 60cm long.

\* For roofs below 15° pitch, VS needs to be raised to 15° and custom flashed. VELUX can assist with technical advice and drawings. (NB: build-up not recommended in Bushfire areas.)

\*\* VELUX recommends VCM is installed with a slight pitch (e.g. 3°-5°) to help reduce condensation build-up and water ponding on the glass.

† U-value (W/m²K) and SHGC data based on AFRC simulations, (complete skylight size; VS: 1140mm x 1180mm, VCM: 1275mm x 1275mm).

# VCM Cyclone test not performed with screws provided, installation requires #8 roofing screws. †† Assessed in closed position.

^ Custom-made flashing required. Skylight tested in closed position, metal flywire mesh protection required for opening apertures (consult local council). Roof pitch; VS: 18°-75°, VCM: 0°-60°.

NB: NCC Vol 1 & 2 regulations (Prevention of Falls from Windows – Balustrades & Barriers): contact VELUX for information relating to restrictor devices for within-reach opening skylights.

# Outstanding daylight provision

where extra ventilation is not required

FCM skylights: Versatile double-glazed alternative to acrylic domes.



Old acrylic domes can be easily damaged.

FCM SKYLIGHTS ARE IDEAL REPLACEMENTS\*\* FOR ACRYLIC DOMES. 11 sizes available to replace common acrylic dome sizes.

In simulated tests\* VELUX skylights withstood hailstones, up to the size of cricket balls, launched at speeds experienced during heavy storms.



See Hail Storm case study. [www.velux.com.au](http://www.velux.com.au)

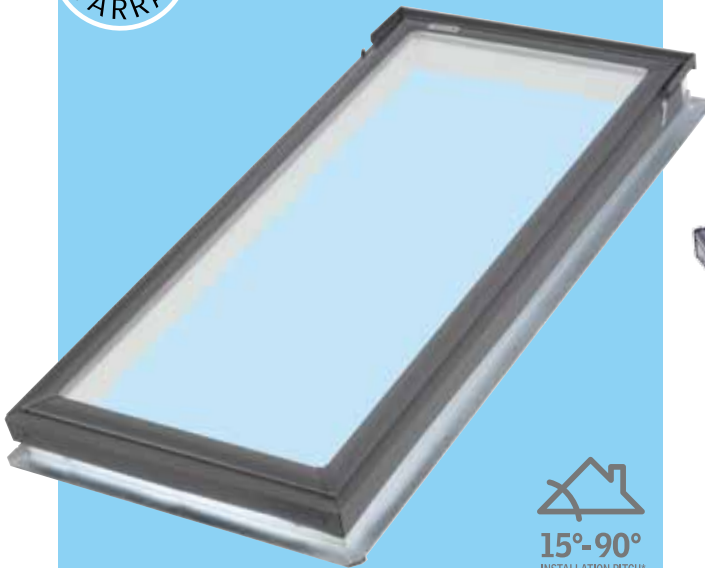
\*\* Custom-made collar adaptor (not supplied) required to fit.

\*ASTM E822-2009 standard practice for determining resistance of Solar Collector Covers to Hail impact with propelled ice balls.





## Pitched Roofs



### FS

#### Fixed (non opening)



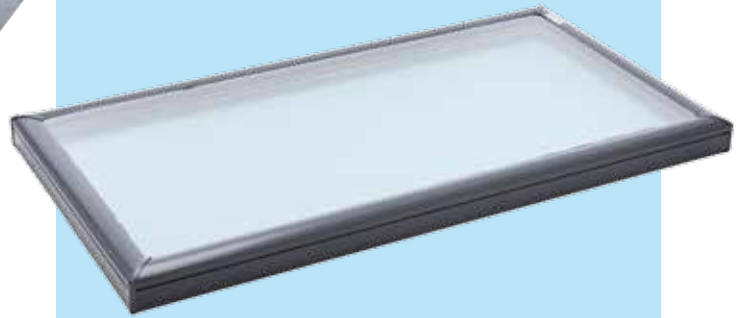
Cost effective for creating light-filled rooms where adequate ventilation already exists. Energy efficient glazing and the use of blinds ensure heat transference is minimised.

- White painted interior timber frame.
- Outer aluminium cappings (grey).
- Complete with flashing for corrugated iron or tile roofs.
- High Performance double glazing as standard; with NEAT™ outer coating: reduces cleaning frequency.
- Smooth profile sits lower in the roof, does not obstruct the roofline.
- Available in 10 sizes.

Technical Performance	
U-value†	
Skylight	2.60
Glass only	1.93
Solar Heat Gain Co-efficient†	
Skylight	0.24
Glass only	0.28
Heat block	
Approx 75%	
Bushfire^	
BAL40	
Hailstone Test	
VELUX Simulated Tests ASTM E822-2009	
WERS max 5 stars (summer rating)	
★★★★★	
Australian Standards	
AS4285	AS1288
AS3959^	AS1530.8.1



## Flat Roofs



### FCM

#### Fixed (non opening)



The brilliantly simple FCM flat roof skylight incorporates the VELUX High Performance double glazed, laminated unit and an all-metal exterior frame.

- Unlike acrylic or polycarbonate – laminated glass will not fade nor discolour over time.
- The smooth exterior gives a lower profile on the roof.
- High Performance double glazing as standard; with NEAT™ outer coating: reduces cleaning frequency.
- Approx 99% UV Block.
- Available in 11 sizes.
- Maintenance-free anodized heavy-gauge aluminium frame.
- Requires custom-made flashing (not supplied by VELUX).
- Versatile positioning††: most sizes can be used in portrait, landscape or even "diamond shape" orientation.

Technical Performance	
U-value†	
Skylight	2.9‡
Glass only	1.93
Solar Heat Gain Co-efficient†	
Skylight	0.28
Glass only	0.28
Heat block	
Approx 70%	
Bushfire^	
BAL40	
Hailstone Test	
VELUX Simulated Tests ASTM E822-2009	
WERS max 5 stars (summer rating)	
★★★★★	
Australian Standards	
AS4285	AS1288
AS3959^	AS1530.8.1

## Blinds for FS

### Manual Honeycomb – FHCD

requires ZXT 200 rod control for out-of-reach.



### Solar-powered Honeycomb – FSCD

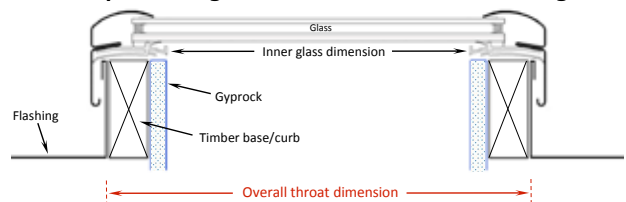
### Solar-powered Blockout – DSD

Includes wireless, wall-mounted keypad.



- All blinds are available in white. • Sold separately.
- Unique installation system allows easy installation.

## Preparation guide for custom-made flashing



Note: If timber hob is greater than 38mm the Gyrock will encroach on the glazing area.

‡Skylight must be installed with timber hob and Gyrock, as shown (typical installation), to achieve 2.9 U-value rating.

\* For roofs below 15° pitch, FS needs to be raised to 15° and custom flashed. VELUX can assist with technical advice and drawings. (NB: build-up not recommended in Bushfire areas.)

\*\* VELUX recommends FCM is installed with a slight pitch (e.g. 3°-5°) to help reduce condensation build-up and water ponding on the glass.

† U-value (W/m²K) and SHGC data based on AFRC simulations, (complete skylight size; FS: 1140mm x 1180mm, FCM: 1275mm x 1275mm) .

^ Skylight only. Custom-made flashing required. Roof pitch; FS: 18°-75°, FCM: 0°-60°.

†† FCM 2270 not recommended for "landscape" orientation.

NB: NT DTCM for FCM 3446 was still pending at time of print.



## For Attic Conversions



for within-reach only



15°-90°  
INSTALLATION PITCH\*

## GGL

### Centre-Pivot roof window



Beautifully engineered for a lifetime of use, the GGL is ideal for within-reach attic situations.

- A short pull on the top control bar allows filtered background ventilation even while the window remains shut.
- A second pull on the control bar allows the window to rotate for maximum ventilation – and up to 180° for cleaning the outer pane from inside the room.
- Quality white painted pine sash & frame.
- Complete with flashing for corrugated iron or tile roofs.
- Available in 5 sizes.
- Laminated double glazing as standard.

Technical Performance	
U-value†	
Roof Window	1.30
Glass only	1.00
Solar Heat Gain Co-efficient†	
Skylight	0.31
Glass only	0.30
Heat block	
Approx 70%	
UV Harmful Rays Block	
Approx 95%	
WERS max 5 stars (summer rating)	
★★★★★	
Australian Standards	
AS4285	AS1288



## For Attic Conversions



for within-reach only



15°-55°  
INSTALLATION PITCH\*

## GPL

### Dual action roof window



Developed for use in attics with shallower pitched roofs to maximise roof top views. For within-reach situations only.

- Opens in two ways: the bottom handle allows for top-hung opening; a short pull on the top control bar allows filtered background ventilation even while the window remains shut.
- A second pull on the control bar allows the window to rotate for maximum ventilation – and up to 180° for cleaning the outer pane from inside the room.
- Quality white painted pine sash & frame.
- Complete with flashing for corrugated iron or tile roofs.
- Available in 5 sizes.
- Laminated double glazing as standard.
- Insect screen available as extra.

Technical Performance	
U-value†	
Roof Window	1.30
Glass only	1.00
Solar Heat Gain Co-efficient†	
Skylight	0.31
Glass only	0.30
Heat block	
Approx 70%	
UV Harmful Rays Block	
Approx 95%	
WERS max 5 stars (summer rating)	
★★★★★	
Australian Standards	
AS4285†	AS1288

## Blinds for GGL/GPL

Manual Honeycomb – FHC    Manual Blockout – DKL

- All blinds available in white • Unique installation system allows easy installation • Sold separately

**NB: NEW VELUX blinds and flashings do not fit older Roof Windows. Contact VELUX to check availability of suitable blinds and flashings.**

## Opening Restrictors

NCC Vol 1 & 2 regulations (Prevention of Falls from Windows – Balustrades & Barriers): contact VELUX for information relating to restrictor devices for within-reach opening roof windows.

\* For roofs below 15° pitch, roof windows need to be raised to 15° and custom flashed. VELUX can assist with technical advice and drawings.

† U-value (W/m²K) and SHGC calculated according to EN 14351-1:2006 + A2:2016 (window size 1140mm x 1400mm).

‡ Except Cyclonic.



# Sun Tunnels



## Time-saving design

The VELUX Sun Tunnel has been designed to make installation quick and easy. Tube assembly is simple so little time is spent in the roof cavity.

The VELUX rigid (TWR) and flexible (TWF) Sun Tunnels provide installation flexibility. Rigid tunnels are most suited to roof spaces with minimal obstructions. They have a highly reflective shaft to achieve maximum light output. Flexible tunnels can be used when obstructions in the roof cavity prevent the use of rigid Sun Tunnels.

VELUX Sun Tunnels for pitched roofs are designed to provide natural light into corridors, stairwells, powder rooms and cupboards; where installation of a VELUX Skylight is not possible.



(TWR pictured)



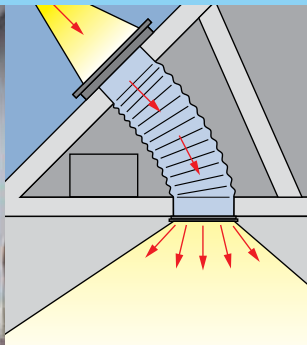
AFTER



BEFORE

CORRIDORS, STAIRWELLS AND POWDER ROOMS

DAYLIGHT WHERE YOU WANT



### Product features:

- Choice of highly reflective rigid or flexible tunnel (350mm diameter, lengths vary – details on page 15).
- 4mm toughened external glass.
- Dual-layered ceiling diffuser – spreads light over an area of up to 9m<sup>2</sup>.
- Interior diffuser with 'Edge Glow', a clear ring on the diffuser's edge.
- Outer polyurethane cappings with integrated flashings for tiled/corrugated iron roofs.
- 'Stay clean' coating on glass exterior reduces cleaning frequency.
- Easier and quicker to install with VELUX Flexi Loc system. (TWR).

TWR
Technical Performance
Bushfire <sup>^</sup>
BAL29
Australian Standards
AS4285 (Except cyclonic)
AS3959 <sup>^</sup>



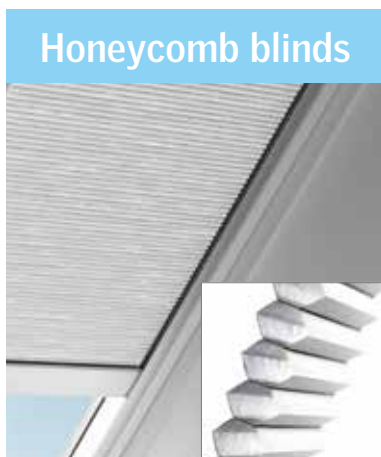
\* Sun Tunnels are not suitable for roof pitches below 15°.  
<sup>^</sup> Bushfire testing applicable to roof pitches 18°-60°. TWR only.



## VELUX Blinds – effective light control

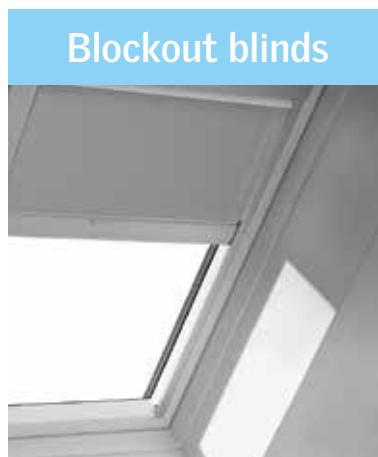


VELUX has a choice of blinds that provide different levels of light control. Tailor-made to fit perfectly to each size of skylight or roof window, they are easy to install and are supplied with white powder-coated side channels that allow the blind to be positioned at any point down the window.



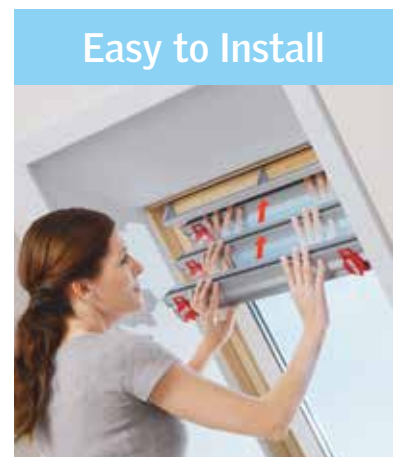
A stylish and modern blind providing protection from heat and glare while providing a near complete blackout from light.

- Honeycomb structured material.
- Near-total light reduction.
- Reduce heat by approx 60%\*.
- Available in white only.
- White rails and body.



Provide near complete blackout from light.

- Blind can be stopped at any position on the window.
- Near-total light reduction.
- Reduce heat by approx 40%\*.
- Available in white only.
- White rails and body.



Unique installation system makes installing our blinds a snap!

Installation is simple if window is within easy reach.

### Blind options

Blind to fit	Manual Honeycomb	Manual Blockout	Solar Powered Honeycomb**	Solar Powered Blockout**
FS	✓ <sup>^</sup>		✓	✓
VS			✓	✓
VSS/E			✓	✓
VCS			✓	
VCM			✓	
GGL	✓ <sup>†</sup>	✓		
GPL	✓ <sup>†</sup>	✓		

<sup>^</sup> Manual Blinds for Fixed Skylights require ZXT 200 rod control for out-of-reach situations.

\*\*Solar powered blinds include wireless wall-mounted keypad (KLI 312).

Contact VELUX for information on blinds for FCM.

**NB: NEW VELUX blinds do not fit older VELUX products. Contact VELUX to check availability of suitable blinds.**

\* Based on VELUX internal testing with 3076 model roof window.

NB: VELUX recommends retracting blinds during windy conditions if skylight is open.

<sup>†</sup> Side channels and top cover will be brushed aluminum finish until approximately September 2021.

# Precision-made Flashings

## Safe, effective rainwater drainage

The unique construction of VELUX flashings ensures safe drainage of rainwater coming from the roof above the window. Because the roofing material covers both top and sides, VELUX flashings are largely unobtrusive. To harmonise even further with the roofing material, they are available in standard grey aluminium.



### EDW flashing – for metal or tile roofing. e.g. corrugate, tile

- Flashing for single skylight or roof window.
- Designed for roof pitches from 15° to 90°. For roofs below 15° create pitch-up and use custom made flashing (not supplied by VELUX).

## VELUX Combination Flashing

for metal or tile roofing. e.g. corrugate, tile

Side by Side



Above – Below



Multi (4+)



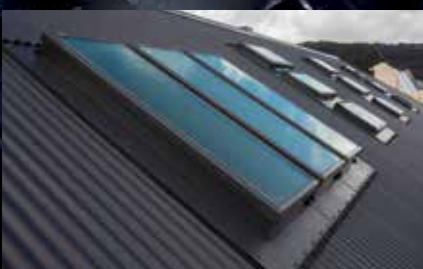
VELUX skylights can be coupled together using 'combi' flashing in a variety of configurations to add truly inspiring features to any room of the house.

When installing skylights with 'combi' flashing, skylights must be installed with a strict 100mm space between each skylight.

See back page for information on 'combi' flashing product codes.

Contact VELUX when installing VSS above/below combination due to positioning of solar panel.

New VELUX flashings do not fit older VELUX products. Contact VELUX for information and pricing. RRP does not include combination flashing, contact VELUX for information regarding price of combination flashing.



### Custom flashing – All other situations

- Required for flat roof skylight installations.
- Useful for situations where VELUX flashing isn't suitable. Such as bushfire area, or when installing in a roof outside the installation pitch range (pitch adaptor), or when colour matching to roof is preferable.
- Not supplied by VELUX, contact VELUX for more information on custom flashing.

## Opening Skylights (pitched roofs)



15°-90°

Overall frame dimension w x h mm ▶



### Manual Page 7

Size code ▶

C01 C04 C06 C08 M02 M04 M06 M08 S01 S06

VS High Performance double glazing (RRP) \$ 871 888 950 1,002 990 1,030 1,120 1,210 1,098 1,364

Package includes: Flashing for single skylight<sup>†</sup> in corrugated iron or tile roof (not suitable for metal profiles such as Klip-Lok, Trimdek), insect screen and operating hook. NB: Operating Rod (ZCT 300, ZOZ 032) for out-of-reach operation and winder handle (ZZZ 201 for within-reach operation) to be purchased separately.

### Solar/Electric Page 5

Size code ▶

C01 C04 C06 C08 M02 M04 M06 M08 S01 S06

VSS (Solar) High Performance double glazing (RRP) \$ 2,053 2,080 2,140 2,198 2,178 2,227 2,323 2,420 2,318 2,580

VSE (Electric) High Performance double glazing (RRP) \$ 1,910 1,934 1,990 2,045 - 2,072 2,161 2,249 2,157 2,400

Package includes: Flashing for single skylight<sup>†</sup> in corrugated iron or tile roof (not suitable for metal profiles such as Klip-Lok, Trimdek), insect screen, pre installed motor, wall-mounted keypad and rain sensor, solar panel included with VSS.

### Blinds<sup>††</sup> (vs, vss & vse) Page 12

Size code ▶

C01 C04 C06 C08 M02 M04 M06 M08 S01 S06

FSCH Solar Honeycomb<sup>^</sup>, White (VS, VSS, VSE) (RRP) \$

479 479 479 479 489 489 489 489 499 499

DSH Solar Blockout<sup>^</sup>, White (VS, VSS, VSE) (RRP) \$

## Fixed Skylights (pitched roofs)



15°-90°

Overall frame dimension w x h mm ▶



### Fixed Page 9

Size code ▶

C01 C04 C06 C08 M02 M04 M06 M08 S01 S06

FS High Performance double glazing (RRP) \$ 491 559 638 710 649 680 762 846 759 892

Package includes: Flashing for single skylight<sup>†</sup> in corrugated iron or tile roof (not suitable for metal profiles such as Klip-Lok, Trimdek).

### Blinds<sup>††</sup> (FS) Page 12

Size code ▶

C01 C04 C06 C08 M02 M04 M06 M08 S01 S06

FHCD Manual Honeycomb<sup>\*\*</sup>, White (FS) (RRP) \$

175 190 200 210 200 200 220 235 210 250

FSCD Solar Honeycomb<sup>^</sup>, White (FS) (RRP) \$

479 479 479 479 489 489 489 489 499 499

DSD Solar Blockout<sup>^</sup>, White (FS) (RRP) \$

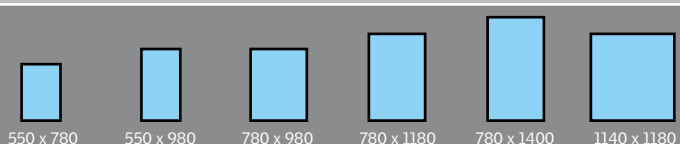
## Opening Roof Windows

Recommended for within-reach situations only



15°-90° (GPL 15°-55°)

Overall frame dimension w x h mm ▶



### Manual Page 10

Size code ▶

CK02 CK04 MK04 MK06 MK08 SK06

GGL Centre-pivot, Laminated double glazing (RRP) \$ 690 730 845 - 1,020 1,260

GPL Dual action, Laminated double glazing (RRP) \$ - 810 919 1,009 1,130 1,321

Package includes: Flashing for single window<sup>†</sup> in corrugated iron or tile roof (not suitable for metal profiles such as Klip-Lok, Trimdek).

ZIL Insect Screens (For GPL) (RRP) \$ 239 239 294 294 294 327

ZIL Insect Screen is fitted to ceiling to cover plaster reveal. Suitable for within-reach applications only. NB: side channel length to be cut to size.

### Blinds<sup>††</sup> (GGL, GPL) Page 12

Size code ▶

CK02 CK04 MK04 MK06 MK08 SK06

FHC Manual Honeycomb, White (GGL, GPL) (RRP) \$

176 189 195 208 228 243

DKL Manual Blockout, White (GGL, GPL) (RRP) \$

†† NEW VELUX blinds and flashings do not fit older VELUX products. Contact VELUX to check availability of suitable blinds and flashings.

\* For roofs below 15° pitch, skylights and roof windows need to be raised to 15° and custom flashed. VELUX can assist with technical advice and drawings.

\*\*Requires ZXT 200 control rod for out-of-reach situations (sold separately). NB: VELUX recommends Solar Blinds for exceptionally high situations.

<sup>^</sup>Wireless wall-mounted keypad supplied.

† For multiple skylights/roof windows installed side by side, contact VELUX for information and pricing on combination flashing.

NB: Skylights and roof windows can only be installed as per orientation depicted above.

Delivery time (in working days)# NSW 1-2 VIC 1-2 SA 3 ACT 1-2 QLD 2-5 NT 3-7 TAS 3-5 WA 1-2<sup>§</sup>

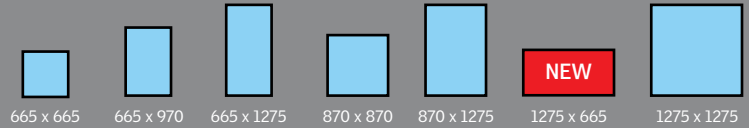
# Metropolitan areas only. Subject to order being received by VELUX before 12 EST noon. Add extra working day to delivery time for orders received by VELUX after 12 EST noon.  
§ Subject to availability at Perth warehouse.

Price list effective April 2021. All prices are supply only and include GST. Prices subject to change without notice. All prices quoted are Recommended Retail Prices (RRP) only.

## Opening Skylights (flat roofs)



Overall throat dimension w x h mm ▶



Manual Page 7	Size code ▶	2222	2234	2246	3030	3046	4622	4646
---------------	-------------	------	------	------	------	------	------	------

VCM High Performance double glazing	(RRP) \$	880	950	1050	1100	1195	-	1400
-------------------------------------	----------	-----	-----	------	------	------	---	------

Package includes: Insect screen and operating hook. Custom flashings are required for VCM (not provided) – VELUX can assist with technical advice and drawings.  
 NB: Operating Rod (ZCT 300, ZOZ 032) for out-of-reach operation and winder handle (ZZZ 212 for within-reach operation) to be purchased separately.  
 NB: VCM can only be installed as per orientation depicted above.

Solar Page 5	Size code ▶	2222	2234	2246	3030	3046	4622	4646
--------------	-------------	------	------	------	------	------	------	------

VCS High Performance double glazing	(RRP) \$	2024	2140	2280	2288	2400	2295	2515
-------------------------------------	----------	------	------	------	------	------	------	------

Package includes: Insect screen, pre installed motor, wall-mounted keypad, rain sensor and solar panel.  
 Custom flashings are required for VCS (not provided) – VELUX can assist with technical advice and drawings.  
 NB: VCS can only be installed as per orientation depicted above.

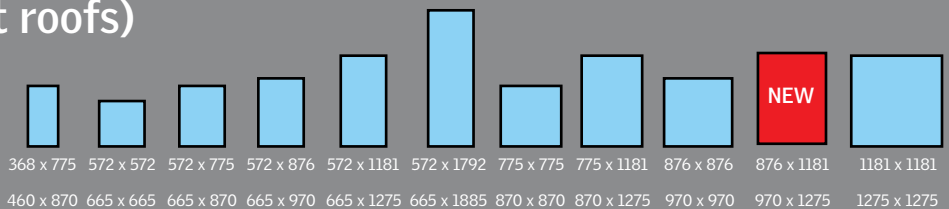
Blinds (VCM/VCS) Page 12	Size code ▶	2222	2234	2246	3030	3046	4622	4646
--------------------------	-------------	------	------	------	------	------	------	------

FSCC Solar Honeycomb, White, Wireless wall-mounted keypad supplied	(RRP) \$	479	479	479	489	489	529	529
---	----------	-----	-----	-----	-----	-----	-----	-----

## Fixed Skylights (flat roofs)



Inner glass dimension w x h mm ▶  
 Overall throat dimension w x h mm ▶



Fixed Page 9	Size code ▶	1430	2222	2230	2234	2246	2270	3030	3046	3434	3446	4646
--------------	-------------	------	------	------	------	------	------	------	------	------	------	------

FCM High Performance double glazing	(RRP) \$	263	286	310	330	373	673	361	460	410	484	509
-------------------------------------	----------	-----	-----	-----	-----	-----	-----	-----	-----	-----	-----	-----

NB: FCM can be positioned in portrait or landscape (FCM 2270 not recommended for landscape orientation).  
 Custom flashings are required for FCM (not provided) – VELUX can assist with technical advice and drawings. Contact VELUX for information on blinds for FCM.

## Sun Tunnels Page 11



Tunnel diameter 350mm  
 460 x 460

TWF OK14 Sun Tunnel with <b>flexible</b> shaft – 2200mm long, 350mm diameter	(RRP) \$	330
--	----------	-----

TWR OK14 Sun Tunnel with <b>rigid</b> shaft – 1650mm long, 350mm diameter	(RRP) \$	549
---	----------	-----

ZTR OK14 <b>Rigid</b> extension – 1240mm (NOT suitable for TWF)	(RRP) \$	220
---	----------	-----

Package complete with integrated flashing for tiled or corrugated iron roofs (not suitable for metal profiles such as Klip-Lok, Trimdek), tunnel and ceiling diffuser.  
 Sun Tunnels are not suitable for roof pitches below 15°.

## Electric and Rod Controls

ZZZ 201 Winder handle (white) to operate VS openable skylights within reach	(RRP) \$	36
---	----------	----

ZZZ 212 Winder handle (white) to operate VCM openable skylights within reach	(RRP) \$	36
--	----------	----

ZOZ 032 Short rod control (60cm) to operate within reach, manual openable skylights	(RRP) \$	43
---	----------	----

ZCT 300 Extendable rod control to operate manual openable skylights. 145cm – 285cm length	(RRP) \$	58
---	----------	----

ZXT 200 Extendable rod control to operate manual fixed skylight blinds. 100cm – 180cm length	(RRP) \$	50
--	----------	----

KIX 300 VELUX ACTIVE starter kit – includes 1 x internet gateway, 1 x climate sensor, 1 x departure switch	(RRP) \$	449
--	----------	-----

KLA 300 VELUX ACTIVE indoor climate sensor Additional climate sensors recommended if multiple rooms contain opening skylights	(RRP) \$	200
--	----------	-----

KLF 200 Interface Unit. Connect to building managements systems, sensors and switches Individual control of 5 products (or groups), up to 200 products in total	(RRP) \$	545
--	----------	-----

Delivery time (in working days)#	NSW 1-2	VIC 1-2	SA 3	ACT 1-2	QLD 2-5	NT 3-7	TAS 3-5	WA 1-2 <sup>§</sup>
----------------------------------	---------	---------	------	---------	---------	--------	---------	---------------------

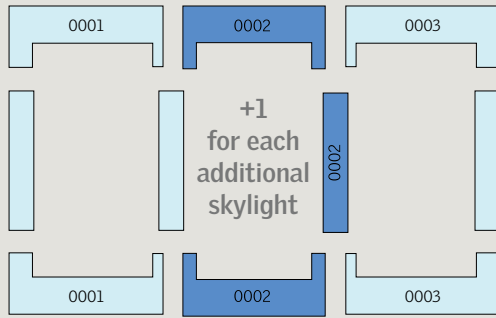
# Metropolitan areas only. Subject to order being received by VELUX before 12 EST noon. Add extra working day to delivery time for orders received by VELUX after 12 EST noon.  
 § Subject to availability at Perth warehouse.

Price list effective April 2021. All prices are supply only and include GST. Prices subject to change without notice. All prices quoted are Recommended Retail Prices (RRP) only.

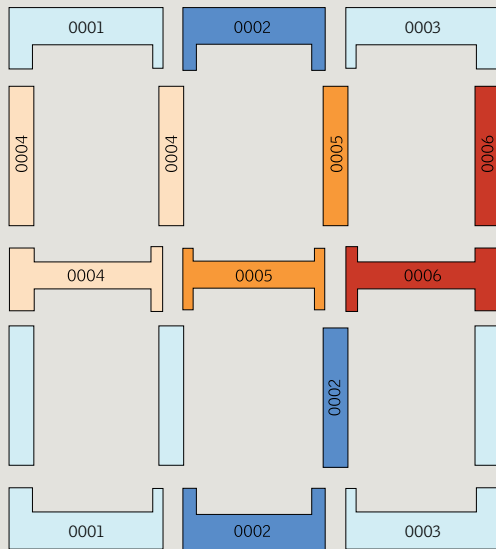
# EKW Combination Flashing

Use when combining multiple pitched roof skylights\* together

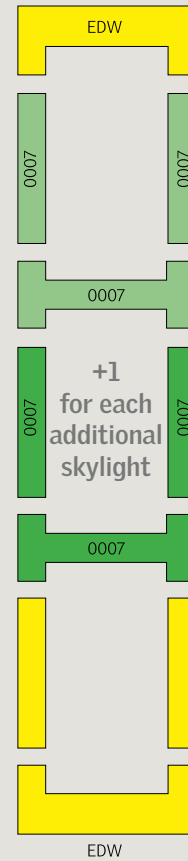
## Side by Side



## Multi (4+)



## Above - Below



Select your skylight configuration and note the flashing components required.

Combi Product Code: EKW SIZE 000X

Example: 3 skylights side-by-side require 0001, 0002, 0003 components.

Codes become EKW M04 0001, EKW M04 0002, EKW M04 0003

\* Not suitable for flat roof skylights.

*Bringing light to life™*

VELUX Australia Pty Ltd  
78 Henderson Road, Alexandria NSW 2015

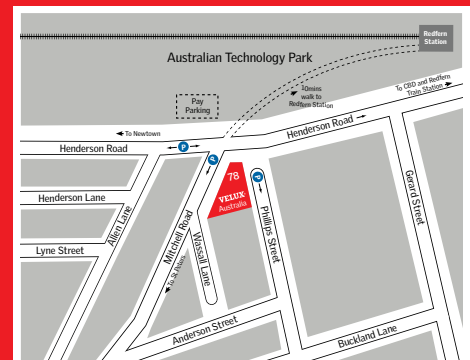
Customer Services: Tel: 1300 859 856  
Fax: (02) 9550 3289  
E-mail: [customer.service@velux.com.au](mailto:customer.service@velux.com.au)  
@veluxaustralia

[www.velux.com.au](http://www.velux.com.au)

**VELUX®**

## SYDNEY HEAD OFFICE & SHOWROOM

Showroom may be closed due to the COVID-19 situation.  
Please call before visiting.



OPENING TIMES:  
Sydney Head Office: 8am-5pm (Mon-Fri)  
Showroom: 8.30am-4.30pm (Mon-Fri)